

ELARI[®]

KidPhone 3G



Quick Start Guide

Contents

I.	Product Introduction	3
II.	SIM card Installation.....	5
III.	Instructions for Registration	7
IV.	Connecting to the smartphone.....	9
V.	App Description	11
VI.	Warnings	14
VII.	Operation Guide.....	17
VIII.	FAQ.....	29

I. Product Introduction

1. Product description:

KidPhone 3G – Kid's 3G watch-phone with GPS/LBS/WiFi tracking, videochat and SOS button.

Package contents:



KidPhone 3G



USB charging
cable

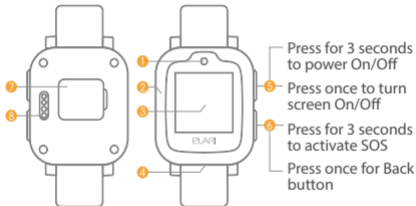


Quick start
guide



Warranty card

2. Product details:



1. Camera

2. Microphone

3. Display screen &
touch panel

4. Speaker

5. On/Off button

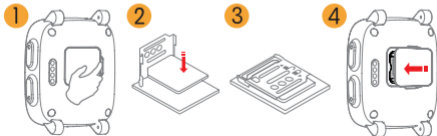
6. SOS and Back button

7. SIM card cover

8. Charging port

II. SIM card Installation

1. Power off the device and open the plastic SIM cover.
2. Push and flip open the metal SIM slot cover and install the nanoSIM card with the metal contacts facing down.
3. Flip close SIM slot and slide the SIM slot cover to lock it.
4. Close the plastic SIM cover.



Important note: if your SIM card has a PIN code request, it must be turned off before installation into KidPhone 3G. The steps are:

1. Place your SIM card into your phone first.
2. Go to menu with SIM card settings.
3. Choose option to turn off PIN code request.
4. Save this setting to your SIM.
5. Take out SIM card from the phone and insert into KidPhone 3G.

Also, please make sure the SIM card can connect to the Internet, receive text messages, support incoming calls. KidPhone 3G supports 2G: 900/1800, 3G: 2100/900 WCDMA.

III. App Installation

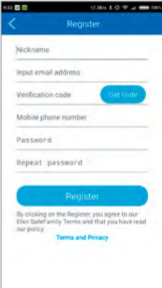
Downloading app

Find the free Elari SafeFamily app on Google Play or App Store.
Or scan QR code to go to the app in the Google Play or App Store.



Instructions for Registration

- Open the Elari SafeFamily app and click "Register"
- Read Terms and Privacy
- Input nickname and your email address
- Get registration code from email and input this code
- Input your mobile phone number. Make sure you have correctly entered phone number using country code: <+><country code><phone number>. For example +1234567890. Don't use symbols like '(', ')', '-', '/', '<', '>'
- Create password and repeat it



The screenshot shows the 'Register' screen of the Elari SafeFamily app. At the top, there is a blue header with a back arrow and the word 'Register'. Below the header, there are several input fields: 'Nickname', 'Input email address', 'Verification code' (with a blue 'Get code' button to its right), 'Mobile phone number', 'Password', and 'Repeat password'. At the bottom, there is a large blue 'Register' button. Below the button, there is a line of text: 'By clicking on the Register, you agree to our Elari SafeFamily Terms and that you have read our policy'. Below this text is a blue link that says 'Terms and Privacy'.

IV. Connecting to the smartphone

1. Insert SIM card into the watch (see more in II).
2. Register app (see more in III).
3. Bind your KidPhone 3G to Administrator's account.
 - a) Turn the watch ON. You should see the watch's QR code on the screen. If not please check FAQ.
 - b) Start binding in the Elari SafeFamily app.
 - c) Scan QR code from the watch's screen using app.



Note: first user who scanned QR code becomes the Administrator. Other family members can scan the QR code shared from administrator's app or be invited to become family members.

d) Complete user's profile: add the watch's phone number, child image, nickname, etc.

Note: please make sure to enter correctly the watch's phone number with required country code.

e) When binding is complete, app will display real-time location of the watch on a map.



The screenshot shows a mobile application interface with a blue header bar labeled "Information". Below the header, there is a form with several input fields and a "Complete" button at the bottom. The fields are:

- Image:** A circular placeholder for a profile picture.
- Phone number:** A text input field with the placeholder text "Input device phone numl".
- Nickname:** A text input field with the placeholder text "Input nickname".
- D.O.B:** A date selection field with the placeholder text "Select date".
- Gender:** A dropdown menu with "Male" selected.
- Height:** A text input field with the placeholder text "Height".
- Weight:** A text input field with the placeholder text "Weight".
- Grade:** A dropdown menu with "Grade 1" selected.

A blue button labeled "Complete" is located at the bottom of the form.

V. App Description

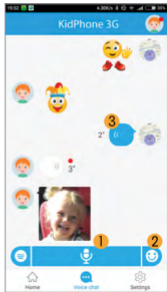
1. Home page

- 1) Photos shared from watch.
- 2) Calling button: click to make a voice call to the watch.
- 3) Step counter: select to check pedometer information from the watch.
- 4) Audio-monitoring: select to request the watch to call back the user's phone number. No sound or display message will be heard or appear for watch user.
- 5) Videochat: click to start videochat with the watch.
- 6) The watch's battery level.
- 7) Map: click on the map to see location on a full screen map, change map layer, update location and route to the watch.
- 8) Manual positioning: click to request current location of the watch.
- 9) Switch between watches if use more than one.



2. Voicechat

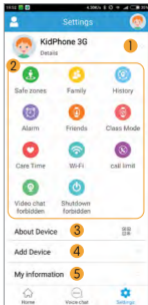
- 1) Voicechat button: hold the button to record, release to send the recording, 15 sec limit for one recorded message.
- 2) Emoji: select the button and choose emoji or stickers to send it to the watch.
- 3) Voice message: short click to listen the message, long press on avatar to delete message.



3. Settings

System and account settings

- 1) Set device information.
- 2) Set safe zones, manage the contact list and family members, see location history, set alarms, manage friends, set class mode, set care time, set WiFi password, set white list option, allow videochat from the watch, forbid turning off device.
- 3) About device: you can check the device's IMEI and QR code, and unbind the watch.
- 4) Add another watch to the app.
- 5) My information: manage your account.



VI. Warnings

1. This product is not a toy. Do not allow children or pets to play with your KidPhone 3G. The product contains small components that can be a choking hazard.
2. KidPhone 3G is splash-resistant. It can withstand raindrops and sweat, however, it should be removed before swimming or showering.
3. Certain atmosphere factors and other error sources can affect the accuracy of GPS.
4. Do not store the device under extreme temperatures.
5. Do not use or store device in dusty and dirty areas.
6. Do not drop, knock, or shake device. Rough handling can disrupt internal circuit board and mechanical parts.
7. Charger output must be: 5 V, 1A (standard USB charger).

8. During first start up of the watch, Google Play Services will ask your permission to check your location. Without Google Play Services, geolocation function won't work properly. Please make sure you confirm Google Play Services permission. If you accidentally have denied Google Play Services, just restart the watch to make this window appear again.

9. By default, data roaming function on the watch is turned on. Please don't forget to turn it off if you don't need this function.

10. Please make sure you have correctly entered phone numbers using country code: <+><country code><phone number>. For example +1234567890. Don't use symbols like '(', ')', '-', ' ', '<', '>'.

11. To prevent overheating, the videochat function is limited to 3 minutes duration. Timeout between videochats should be not less than 5 minutes. In case of emergency, videochat can be initiated from the app by entering a confirmation code.

12. KidPhone 3G works in 2G/3G network. Photo sharing, videochat function and automatic firmware updates can use significant mobile internet traffic. Choose operator's tariff accordingly and set WiFi passwords for frequently visited places to lower the amount of mobile traffic.

13. Regularly check for available updates in watch settings.

VII. Operation Guide

Two-way communication

- 1) Call or videochat from watch-phone to smartphone or another watch-phone: slide the screen to enter "Phonebook", select a contact to make phone call or videochat. Press power button to end phone call.
- 2) Call or videochat from app to watch-phone: select call or videochat icon on the Home page.



Note: to prevent overheating and battery drain, the videochat function is limited to 3 minutes duration. Timeout between videochats should be not less than 5 minutes. In case of emergency, videochat can be initiated from the app by permitting with confirmation code. Videochat uses Internet traffic and requires fast Internet connection. Choose data contract for SIM card and carrier properly based on tariffs and network coverage.



Voicechat

- 1) Slide the screen to enter "Voicechat", select a contact.
 - 2) Hold mic to record voice message and release to send out.
- The watch-phone can receive voice and text messages, emoji and stickers. Watch-phone can send voice messages, photos, emoji and stickers to the app.



3) Voicechat via the app: select "Voicechat" and start chatting and sending emoji and stickers to the watch-phone.

Note: the watch-phone supports one-to-one voice chatting (15 seconds per voice message).

Pedometer

All-day activity monitoring counts your kid's steps.

Note: please enter correct weight, height and birthday for correct "burned calories" calculation.



SOS

Hold the SOS button for 3 seconds to start the SOS. All users in the app will receive an alarm with watch's GPS location as well as a 30-second audio recording.



Taking photos and managing the album

Using frontal camera, KidPhone 3G allows to take great photos. User can store photos in the album, browse, share with family or delete.





Making friends

Slide the screen to enter "Making friends" mode. Shake the device to make friends with people who wear the same device by Elari are within 2 m and who have their device in the "Making friends" mode.



Change the theme

Press the home screen for 3 seconds to switch to other themes. Slide the screen left or right to choose the theme. Click on the screen to confirm the theme which you prefer.



Alarm

Slide the screen to select "Alarm". You can add Alarm and configure repeat setting. To delete existing alarm slide left and tap delete.



Watch settings

Slide the screen to enter "Settings". You can check firmware version and available updates, IMEI number, set alarm and ringtone volume, time zone, theme, system language, turn On/Off data roaming and manage WiFi networks.



VIII. FAQ

Q: What SIM card does the KidPhone 3G support?

A: KidPhone 3G supports 2G: 900/1800, 3G: 2100/900 WCDMA nano-SIM card.

Q: What is the standby time for KidPhone 3G?

A: KidPhone 3G battery capacity is 580 mAh. The standby time depends on tracking mode and position frequency. Average standby time is more than 72 hours.

Q: What is the age range for KidPhone 3G?

A: Target users are children from 3 to 12 years old.

Q: Are the materials of KidPhone 3G safe and secure?

A: KidPhone 3G only uses the materials that conform to the EU children's toys material safety standards.

Q: How can I clean this watch?

A: Please wipe it with a clean damp cloth; add a little bit of alcohol if dirt doesn't remove easily.

Q: Does KidPhone 3G radiation affect kid's health?

A: KidPhone 3G radiation rate is much lower than maximums allowed by the EU standard.


Q: Is KidPhone 3G waterproof?

A: KidPhone 3G is splash-resistant. It can withstand raindrops and a sweat, however, it should be removed before swimming or showering.

Q: Is it normal for the watch to get warm while charging?

A: It is normal for the watch to get warm.

Q: What can I do if QR code won't appear?

A: Check that SIM card is inserted and KidPhone 3G has mobile Internet connection. Make sure your SIM is PIN-unlocked and you see  3G/2G/H+ in a left upper corner on the screen.

Q: What can I do if QR code won't scan?

A: Try again with more light or adjust the distance between camera lens and QR code. Binding code can also be entered manually.

Q: Does the watch need network support when using the geopositioning function?

A: KidPhone 3G needs network support because it uses SIM card data service, which upload location data to the server.

Q: Can the battery of the watch explode when affected by high temperatures or while charging?

A: KidPhone 3G uses a battery that's durable and has a higher safety performance compared to the traditional lithium-ion battery. The gel polymer lithium-ion battery uses a special colloidal electrolyte which will prevent it from exploding as the battery does not produce air or gas even if the liquid boils. This type of battery showed perfect performance in dozens of reliability tests such as crash, puncture, crushing and heating. However, you should not conduct any tests by yourself

Q: How accurate is the location positioning?

A: KidPhone 3G gets position from 3 sources: GPS, WiFi and LBS. GPS-mode is very accurate (5-10 meters). In tall buildings and other urban obstructions there is a small chance of larger deviation. KidPhone 3G will try to get its position via WiFi if GPS signal is not available. WiFi location accuracy is about 50-100 meters. If both WiFi and GPS signals are not available, KidPhone 3G will use LBS to get location. LBS accuracy is about 500-5000 meters.

EAC