

ELARI

KidPhone 4GRM



User Manual

KidPhone 4GR M User Manual

Contents

I.	Product Introduction	3
II.	SIM card installation	5
III.	App installation	7
IV.	Connecting to smartphone	8
V.	Warnings	10
VI.	Storage and transportation	12
VII.	Rules of disposal	12
VIII.	Service life	13
IX.	Manufacturing date	13
X.	Technical specifications	14

I. Product Introduction

1. Product description:

KidPhone 4GR M – Kid's 4G watch-phone with Wi-Fi/GPS/LBS tracking, videochat and SOS button.

Package contents:



KidPhone 4GR M

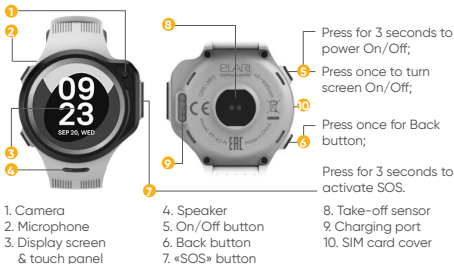


USB charging cable



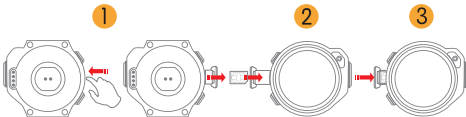
User Manual

2. Product details:



II. SIM card Installation

1. Power off the device and remove the SIM slot from the device.
2. Put on the nanoSIM card with the metal contacts facing up.
3. Insert the SIM slot into the device.



Important note: if your SIM card has a PIN code request, it must be turned off before installation into KidPhone 4GR M.

The steps are:

1. Place your SIM card into your phone first.
 2. Go to menu with SIM card settings.
 3. Choose option to turn off PIN code request.
 4. Save this setting to your SIM.
 5. Take out SIM card from the phone and insert into KidPhone 4GR M.
- Also, please make sure the SIM card can connect to the Internet, receive text messages, support incoming calls. KidPhone 4GR M supports 2G: 900/1800, 3G: 2100/900 WCDMA, 4G (B1/B3/B7/ B8/ B20).

III. App Installation

Downloading the app

Find and install the free* ELARI SafeFamily app on Google Play, App Store or AppGallery. Or scan QR code quickly find to the app in the Google Play, App Store or AppGallery.

*shareware services



Instructions for Registration

- Open the ELARI SafeFamily app and click "Register".
- Read Terms and Privacy.
- Input nickname and your email address.
- Get registration code from email and input this code.
- Input your mobile phone number. Make sure you have correctly entered phone number using country code: <+><country code><phone number>. For example +1234567890. Don't use symbols like '(', ')', '-', ' ', '<', '>'.
- Create password and repeat it.

IV. Connecting to the smartphone

1. Insert SIM card into the watch (see more in II).
2. Register app.
3. Bind your KidPhone 4GR M to Administrator's account.

a) Turn the watch ON. You should see the watch's QR code on the screen. If not please check FAQ.

b) Start binding in the ELARI SafeFamily app.

c) Scan QR code from the watch's screen using app.

Note: first user who scanned QR code becomes the Administrator. Other family members can scan the QR code shared from administrator's app or be invited to become family members.

d) Complete user's profile: add the watch's phone number, child image, nickname, etc.

Note: please make sure to enter correctly the watch's phone number with required country code.

e) When binding is complete, app will display real-time location of the watch on a map.

V. Warnings

1. This product is not a toy. Do not allow children or pets to play with your KidPhone 4GR M. The product contains small components that can be a choking hazard.
2. KidPhone 4GR M is splash-resistant. It can withstand raindrops and sweat, however, **it should be removed before swimming or showering.**
3. Certain atmosphere factors and other error sources can affect the accuracy of GPS.
4. Do not store the device under extreme temperatures.
5. Do not use or store device in dusty and dirty areas.
6. Do not drop, knock, or shake device. Rough handling can disrupt internal circuit board and mechanical parts.
7. Charger output must be: 5 V, 1 A (standard USB charger).
8. By default, data roaming function on the watch is turned on. Please don't forget to turn it off if you don't need this function.

9. Please make sure you have correctly entered phone numbers using country code: <+><country code><phone number>. For example +1234567890. Don't use symbols like '(', ')', '-', ' ', '<', '>'.

10. To prevent overheating, the videochat function is limited to 3 minutes duration. Timeout between videochats should be not less than 5 minutes. In case of emergency, videochat can be initiated from the app by entering a confirmation code.

11. KidPhone 4GR M works in 2G/3G/4G network. Photo sharing, videochat function and automatic firmware updates can use significant mobile internet traffic. Choose operator's tariff accordingly and set Wi-Fi passwords for frequently visited places to lower the amount of mobile traffic.

12. Regularly check for available updates in watch settings.

13. KidPhone 4GR M supports remote monitoring of the environment through a hidden call to the watch*.

* if it is not prohibited by the legislation of the country where the watch is sold.

VI. Storage and transportation

The device should be stored in dry, ventilated storage spaces with the temperature ranging from -10°C to +40°C and humidity from 15 to 85 % (without condensation). Whilst storing and transporting, the handling markings printed on the box should be followed. Whilst transporting any hits and movement of the package in the transporting vehicle should be avoided.

VII. Rules of disposal

After the end of its lifetime, the device should be utilized according to norms, rules and ways that are established in the place of utilization. The accurate information regarding utilization can be found from the appropriate government sources, according to the country of your residence. Manufacturer and authorized person of the manufacturer relieve themselves of responsibility from the possible harm caused by the incorrect usage of the device or not

following the operating rules, setting up the device, intentional or careless actions, as well as any events related to weather or man-made force majeure circumstances.

VIII. Service life

Service life: 2 years

Warranty: 1 year

IX. Manufacturing date

Date of manufacturing is printed on the box

X. Technical specifications

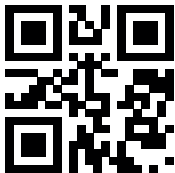
Model	KP-4G M
Geolocation.....	Wi-Fi/GPS/A-GPS/LBS
SIM card type	nanoSIM
Display	1.3" (240 x 240)
Net weight.....	56,5 g

In order to avoid damage and to ensure the continuous functioning of the device, we recommend the following:

- In case of submersion, remove the device from the water immediately, switch it off and clean with a dry cloth
- Do not submerge the device again and avoid further submersion if possible
- Do not submerge the device into salt water
- Firmly insert the slot into the case, otherwise there is a high risk of water getting inside the case

The manufacturer holds the right to change the construction, included accessories and contents of the box, or the manufacturing technique without any notice in order to improve any properties of the device, given that this does not void any quality standards and laws of the country of manufacturing/transit/sale.

Made in China



www.elari.tech

